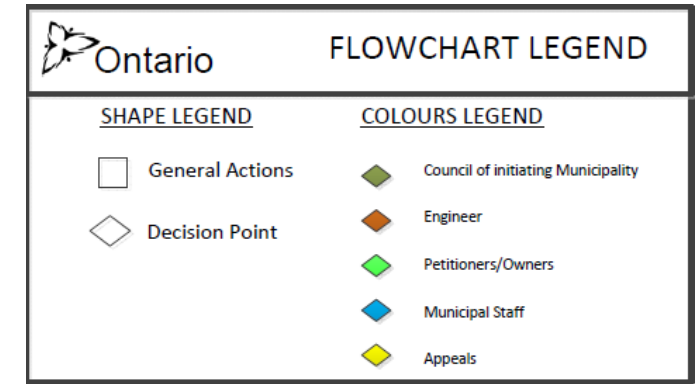
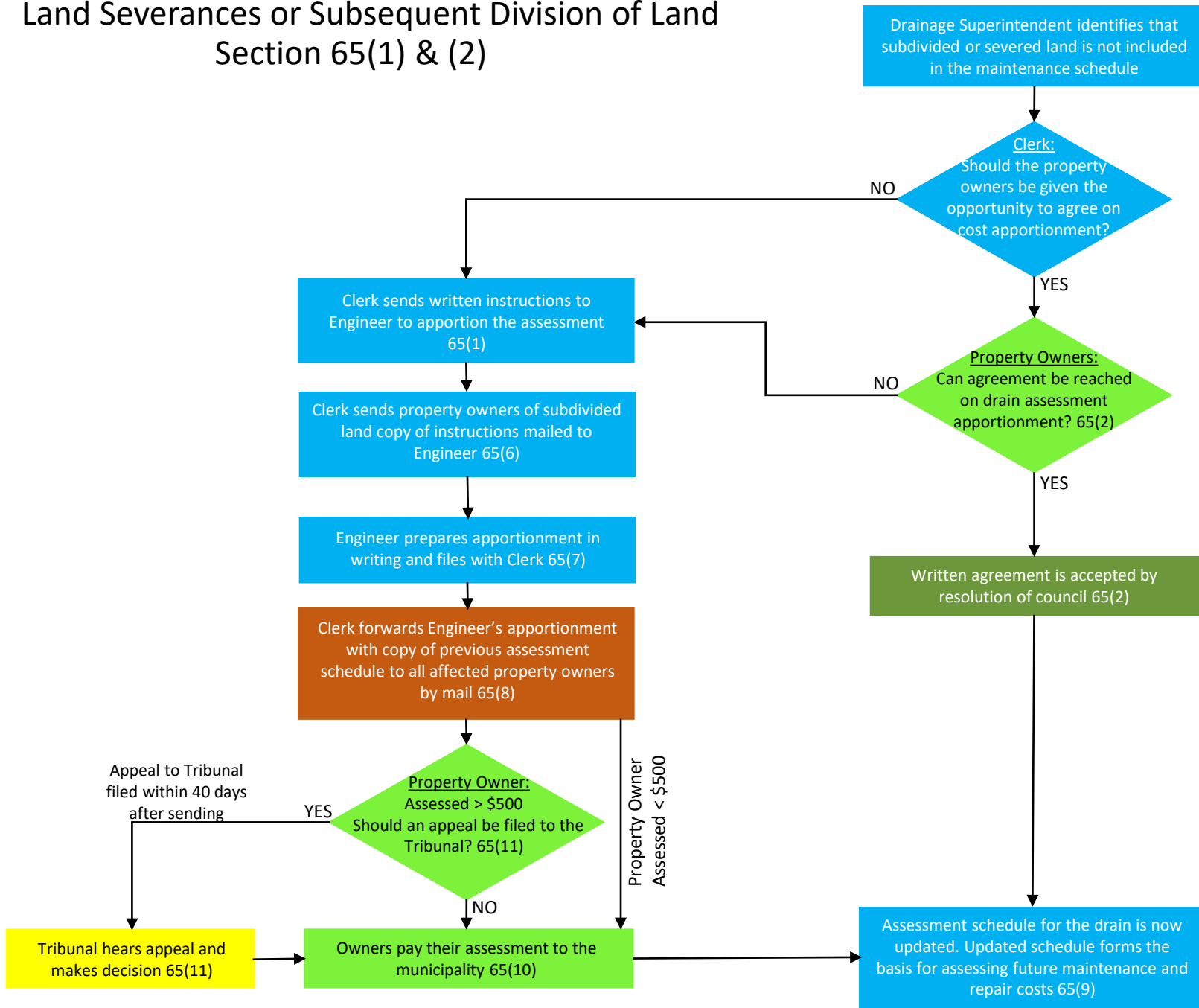


Land Severances or Subsequent Division of Land Section 65(1) & (2)



Source: Ontario Ministry of Agriculture, Food and Rural Affairs. (2018) *Updating Assessment Schedules – Severances or Subdivided Land Section 65(1) and (2)*

LAND USE CHANGES & SUBSEQUENT CONNECTIONS / DISCONNECTIONS SECTION 65(3) & (4)

Ontario **FLOWCHART LEGEND**

SHAPE LEGEND	COLOURS LEGEND
 General Actions	 Council of initiating Municipality
 Decision Point	 Engineer
	 Petitioners/Owners
	 Municipal Staff
	 Appeals

